



**The perfect mix of
performance and smarts**

BradyPrinter i5100 Industrial Label Printer

The perfect mix of performance and smarts

Table of contents

3	Features and advantages
4	BradyPrinter i5100 at a glance
5	Operation panel
6	Applications
7	Media offering
9	Printer specifications
10	Printers
11	Accessories

The Brady advantage

When it comes to identification, safety and compliance, there's a clear advantage to working with Brady. We put our customers first in everything we do.

Our goal is to give you an unrivalled customer experience. We are relentlessly committed to performance and excellence - in our products, services and people.

Our products and solutions perform in ways that others simply can't match. Our people perform in ways that regularly exceed your expectations, and our focus and discipline work toward solid, long-term performance for our customers.

In short, Brady is the company you trust when performance matters most.

Learn more about the Brady advantage at:

www.bradyeurope.com

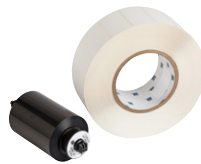
The complete BradyPrinter i5100 solution



i5100 Industrial label printer



Printer accessories



Labels, tags & ribbons



Software for label creation & data integration



Printer technical specifications



Brady products are sold on the condition that the purchaser will test them in actual use and determine for himself/herself their suitability to his/her intended purpose. Brady warrants to the purchaser that Brady products are free from defects in material and workmanship but limits its obligation under this warranty to the replacement of the product which has been shown to Brady's satisfaction to have been defective at the time of its purchase.

The warranty does not extend to any persons who have acquired the product from the purchaser. It is in lieu of any other warranty, including every warranty of sale-ability, marketability or suitability for the intended purpose, and is also in lieu of any other obligation or liability on the part of Brady.

Under no circumstances will Brady be liable for losses, damage, costs or subsequent damage of whatever nature which may arise in connection with the use of, or inability to use, Brady's products.

The BradyPrinter i5100 Industrial Label Printer offers a perfect mix of performance & smarts.

Smart & connected

The BradyPrinter i5100 Industrial Label Printer communicates automatically with Brady's label design apps, label consumables and ink ribbons for a smooth and fast printer setup. Its intuitive, full colour touch screen includes a label and print status monitor which also informs users when the installed ink ribbon does not optimally match the inserted label supplies. Brady labels can easily be loaded thanks to a self-centering roll holder and automatic calibration and label setup. On top of this, the printer features a range of standard ports for common industrial connectivity scenarios.

Excellent print performance

With 300 and 600 dpi printing, the BradyPrinter i5100 offers crisp, high quality printing on reliable, industrial grade labels from 5 up to 110 mm. Driven by a powerful 32 bit and 800 Mhz internal printer processor, the i5100 prints at a speed of up to 300 mm/sec. The printer's interchangeable platen rollers help to keep its performance at maximum, even after intensive use.

Reliable, industrial grade labels

The BradyPrinter i5100 can print on 70 label materials, more than 1200 stock label parts and tailored custom label materials and parts.

Applications include:

- product identification labels
- electronics and printed circuit board labels
- logistics and asset tracking labels
- cable & component identification labels
- laboratory labels





2 YEAR WARRANTY

1. Top-loading design

Reduces footprint in your workspace and simplifies media alignment and loading

2. Ribbon takeup spindle

Both the IP-enabled ribbon and the ribbon take up spindle are keyed for guaranteed correct ink-side orientation and slip quickly into place with no complicated ribbon thread-through, no axles to loosen or tighten and no spare ribbon core needed

3. Print head

300 or 600 dpi print heads are interchangeable through the Brady service department

4. Media guide adjustment (center aligned media)

Center media guides from 5 mm to 114 mm widths

5. Sensors

Both the gap and notch sensors are easy to adjust, and IP enabled media rolls tell user which one to use and where to set them for each part

6. Colour touch screen control panel

Easily adjust printer settings using icons and sliders, and get more information about parts when using Brady IP-enabled rolls

7. Roll holder with label part detection

Printer auto-detects Brady IP-enabled label rolls to communicate part setup information to both printer and Brady software. Holds 76 mm diameter roll cores

8. Ribbon cog with ribbon part detection

Printer auto-detects IP-enabled ribbon part and communicates ribbon information to the user and warns if incorrect ribbon is used

9. Connectivity options

(back of printer) USB, RS232C, ethernet, SD card

10. Platen roller

Green synthetic rubber rollers available in 4 widths which can be user-replaced if worn or to pair narrow roller with narrow media

11. Integrated auto-cutter (optional model)

Built-in cutter for cuttable materials with label lengths of 12 mm or greater

Make changes quickly and easily on the BradyPrinter i5100 with the intuitive touch screen

Display

1. Power on

2. Headline

These functions are displayed: receive print data, record data stream, print mode (Standard mode or Brady mode), warning ribbon end, time, installation of SD card, USB memory and/ or Bluetooth adapter, activation of WiFi, Bluetooth, USB and/ or Ethernet.

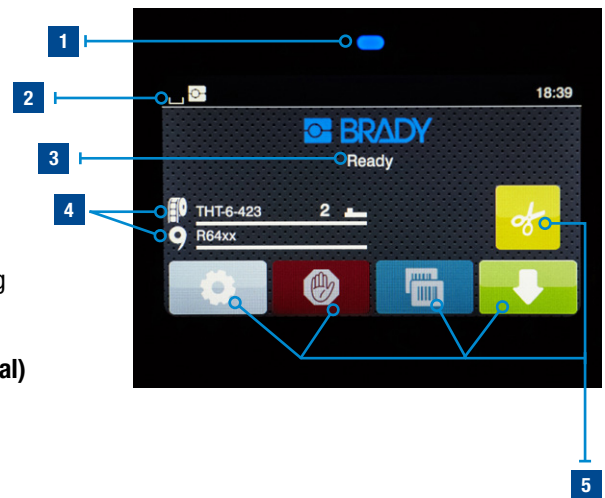
3. Status reports

Ready, pause, number of printed label per print job, label in dispensing position, waiting for external start signal.

4. On-board material status monitor (only with IP-enabled material)

This information is indicated: Installed label roll and ribbon, preferred sensor position and usage of material and ribbon.

5. Operation



Buttons



Jump to menu



Cancel all print jobs



Repetition of the last label



Label feed



Direct cutting (only in cutter version)

Interfaces on the back of the device



1 SD memory card slot

2 2 x USB host ports (for memory stick, scanner, keyboard, BT adapter, WLAN stick)

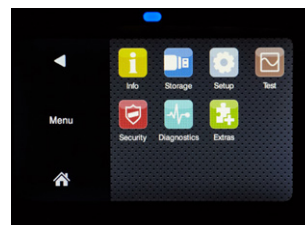
3 USB 2.0 Hi-speed device port for PC connection

4 Ethernet 10/100 BASE-T port

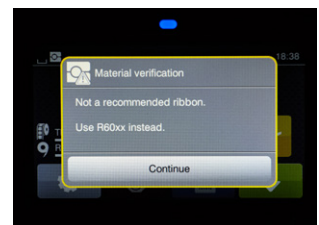
5 RS232C 1,200 to 230,400 baud/8 bit

Colourful icons, buttons and sliders allow you to navigate between screens, make printer setting changes and view the printer status with ease.

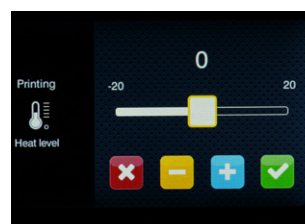
The easy-to-use interface also includes responsive prompts and embedded how-to videos.



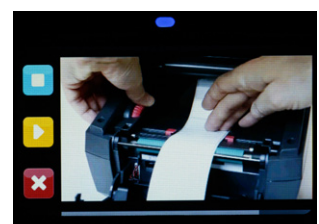
Menu selection



Ribbon warning



Printing parameters



How-to videos

General & industrial identification

Asset & component marking to be used on all kind of surfaces (smooth, rough, textured, low energy...).



Rating & name plate labels



Pre-printed labels

Electrical, voice/datacom identification

Wire & cable marking for twisted pair data cables (UTP, FTP...), fibre optic cables, conductors, computer wires, electrical installation wires & cables, power & ground cables, energy cables...

Component marking for patch panels, control panels, punch blocks, terminal blocks, breaker boxes, face-plates...



Flags



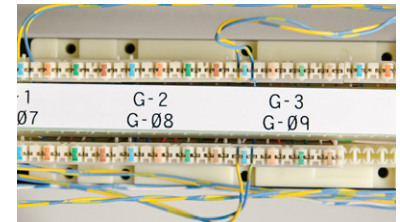
Tags



Self-lams



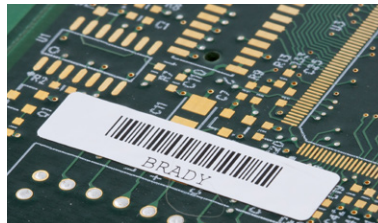
Sleeves



Terminal block labels

Electronics identification

Circuit board marking and component marking for printed circuit board identification (also static dissipative), relays, solenoids,...



Electronic component labels



High resistant labels

Laboratory identification & sample tracking

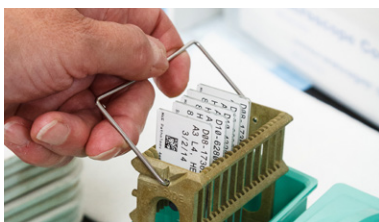
Laboratory sample marking for tubes, well plates, crop tubes, tissue cassettes, slides, lab equipments,...



Well plate labels



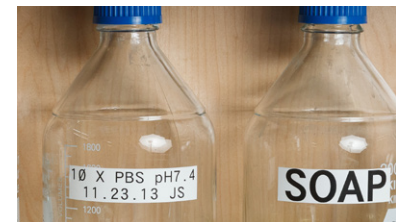
Conical & large tube labels



Slide labels



Tissue cassette labels



Removable labels for glassware

Brady IP enabled material for intelligent printing

RFID technology allows the printer, labels and ribbons and software to work together for efficient label setup and creation.

All IP-enabled materials have an RFID tag embedded in them, which stores the material size, type, colour, quantity, and compatibility.

When installed, the tag sends that information to the printer and displays it on screen to provide you with a variety of time and cost-saving benefits, including on-board material status monitor and ribbon recognition.

Look for this logo on Brady Materials, to gain the full benefit of the label roll communicating with the printer and the software.



Material	
B-109	Polyethylene Tag
B-342	Heat-shrink Polyolefin Sleeve
B-345	High Temperature Heat-shrink Polyvinylidene Fluoride Sleeve
B-350	Water-indicating Polyester/Paper Laminate
B-408	Repositionable Paper
B-412	Polypropylene Tag
B-413	Metallic, Non-metal Polyester
B-422	Polyester
B-423	Polyester
B-423/B-966	Polyester with Polyester Overlaminate
B-424	Paper
B-425	Polypropylene
B-427	Self-laminating Vinyl
B-430	Polyester
B-432	Polyester
B-437	Polyvinylfluoride
B-449	Polypropylene
B-459	Polyester
B-461	Self-laminating Polyester
B-472	Polyimide
B-473	Static Dissipative Polyester
B-480	Metallic, Non-metal Polyester
B-481	StainerBondz™ Polyester
B-482	Polyester
B-483	Polyester

Material	
B-484	Polyester
B-488	Polyester
B-489	Polyester
B-490	Freezerbondz™ Polyester
B-492	Freezerbondz™ Polyester
B-498	Vinyl Cloth
B-499	Nylon Cloth
B-533	Polyester
B-717	Polyimide
B-718	Polyimide
B-719	Polyimide
B-724	Polyimide
B-727	Polyimide
B-728	Polyimide
B-729	Polyimide
B-7546	Tamper-evident Polyester
B-7566	Tamper-evident Polyester
B-7594	Polypropylene
B-7610	Paper
B-776	Polyimide
B-8117	Polyester
B-8423	Polyester
B-8591	Polymer

The Brady R&D difference

Brady has R&D centers and manufacturing capabilities across the globe to develop, validate and produce in-house labels with the complex construction and high-quality print to be your customised, total labeling solution.

Brady IP enabled ribbons

All Brady ribbons are developed to meet the performance requirements of the materials to be printed. The reason for this is that the bond between the ribbon and the label is critical to the success of the legend permanence.

IP-Enabled print ribbons are auto-detected in the BradyPrinter i5100 allowing the printer to display the part installed, how much is remaining and to warn you if you've installed the incorrect ribbon for the IP-enabled label part installed. IP-Enabled ribbons are also designed to guarantee correct ink-facing direction every time which prevents damage to your print head and allows you to load them quickly, and get back to work.

Printer Ribbon Series	Formulation	Colour	Notes / Details
R4300	Wax/Resin	Black	Strong environmental resistance against smearing and chemicals. Also, reliable, sharp-edge print quality to maximise bar code readability.
R4400	Resin	Blue, Green, Red	High density ribbon, excellent solvent resistance, high heat resistance, and super scratch resistance.
R4500	Wax/Resin	Blue, Red, Silver	Strong environmental resistance against smearing and chemicals. Also, reliable, sharp-edge print quality to maximise bar code readability.
R4900	Resin	Black	This ribbon has superb smear resistance at high temperatures and superior solvent resistance.
R6000HF	Resin	Black	High density halogen free ribbon, excellent solvent resistance, high heat resistance, and super scratch resistance.
R6100	Wax/Resin	Black	Outstanding durability for a general purpose ribbon. Reduced printhead energy requirements.
R6200	Resin	Black	Designed for harsh environment labelling applications. Superior abrasion, chemical and heat resistance.
R6400	Resin	Black	Ultra high chemical resistance at high temperatures. Superior solvent resistance.
R6600	Resin	Black	Diesel resistant ribbon for thermal printing on Brady PermaSleeve™ and Heatex™ Sleeves. This ribbon has excellent chemical and abrasion resistance.



Always use a ribbon that is slightly wider than the media and roller width to prevent media and roller from touching the bare print head surface.

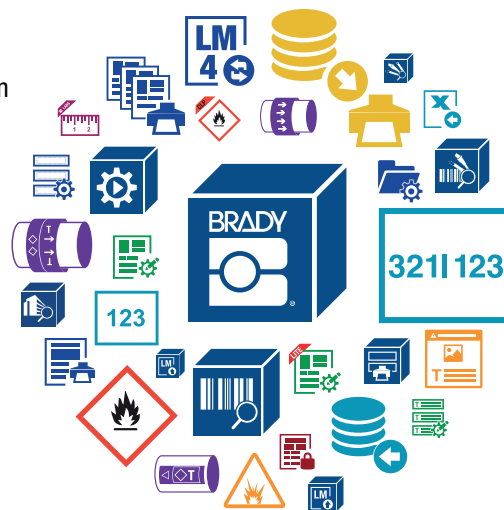
Brady Workstation

Brady Workstation offers professional, intuitive apps to design quality product and cable labels and safety signs. With Brady Workstation label design becomes easier, faster and quickly adaptable to new label norms thanks to centralised updates.

Select the apps you need

Simply select the apps you need, download the 30-day trial and purchase when satisfied. Available product, cable, safety and facility identification apps enable you to:

- design and edit custom labels and signs
- design label templates and lock elements for consistency
- create text-only cable labels
- automate label creation
- easily import data
- easily set up complex label sequences
- easily design CLP-chemical labels
- print lockout procedures, tags and energy source labels
- design safety and facility signs



Available in multiple languages

Brady Workstation apps are available in more than 20 languages, including English, French, German, Russian, Spanish, Italian, Polish and Dutch. Select your language before downloading from the drop down menu.

Easily connect to your printer

Brady Workstation works seamlessly with a range of Brady desktop and portable printers. Brady's high-end label printers also offer bi-directional communication with Brady Workstation and will inform users if they have to switch label materials to print specific label designs. Printer compatibility is shown in Brady Workstation on an app by app basis.

Try it today! Discover Brady Workstation at www.bradyeurope.com/workstation or download at workstation.bradyid.com.

PRINTER	
Description	BradyPrinter i5100 Industrial Label Printer
Includes	This i5100 printer comes in a cardboard box. It ships with a power cord, a USB cable, a product CD holding the driver, the user manual in languages, the configuration/settings manual in English and a printed user manual in English, an RFID enabled roll holder, a ribbon take up spindle and a Brady Workstation Basic Suite or a Brady Workstation PWID Suite
Applications	General & Industrial Identification; Circuit Board & Component Identification; Wire & Cable Marking; Laboratory Identification; Asset Identification
Print Speed (mm/sec)	up to 300mm/sec
Print Resolution (dpi)	300 / 600
Stand-alone Printing (Detached from PC)	Stand-alone & Peripheral
Internal Memory	256MB RAM, 50MB IFFS Flash, SD card, slot up to 512GB
Colour Capability	Monocolour
Language Support	Arabic (Egypt), Bulgarian, Chinese (Traditional & Simplified), Croatian, Czech, Danish, Dutch, English, Finnish, French, German, Greek, Hungarian, Italian, Lithuanian, Macedonian, Norwegian (Bokmål), Persian (Farsi), Polish, Portuguese, Romanian, Russian, Serbian, Slovenian, Spanish, Swedish, Turkish, Thai, Hebrew
Weight (kg)	6.62
Size W x H x D (mm)	240 x 317 x 435
Calibration	Automated with IP-enabled consumables
Warranty	2 years

MEDIA	
Format	Media & Ribbon, supplied separately
Continuous vs Die-cut Labels	Continuous Tape & Die Cut Labels
Compatible Media	2HT-, 3HT-, 3PS-, PS-, THT-, THTCLP-, THTEP-, THTFP-, THTFT-, XTHT-, PSL-
Custom Labels	Yes
Number of Stock parts	1200+ standard parts
Materials Supported	Direct Thermal Paper; Freezerbondz™ Polyester; Heat-shrink Polyolefin Sleeves; High Temperature Heat-shrink Polyvinylidene Fluoride Sleeves; Metallic, Non-metal Polyester; Metallised Polyester; Nylon Cloth; Paper; Polyester; Polyethylene Foam Laminate Polyester; Polyethylene Tag; Polyimide; Polymer; Polypropylene; Polypropylene Tag; Polyvinylfluoride; Removable Polyester; Repositionable Paper; Self-laminating Polyester; Self-laminating Vinyl; StainerBondz™ Polyester; Static Dissipative Polyester; Tamper-evident Metallised Polyester; Tamper-evident Polyester; Tamper-resistant Metallised Vinyl; Vinyl Cloth; Water-indicating Polyester
Max. Label Width (mm)	110
Min. Label Height (mm)	5
Min. Label Width (mm)	5
Max. Liner Width (mm)	112
Min. Liner Width (mm)	9
Max. Print Width (mm)	105.7
Recommended Usage per Day	5000

POWER SUPPLY	
Power Supply	AC Adaptor
Power Supply Voltage	110-240V

DISPLAY	
Display	Colour LCD Touchscreen
Display Resolution	272 x 480 px
On Screen Indicators	Ribbon Remaining, Supply Remaining, USB Slave Status, Ethernet Status, Bluetooth Status, Data Reception, Data Recording, Digital Clock, USB Memory Stick inserted, SD Memory Card inserted, WLAN Field Intensity, Print Mode: Brady or Standard, Ribbon and label part number recognition, Sensor: selection and positioning

FONTS/GRAPHICS/SYMBOLOLOGIES	
Built-in Fonts	OCR-A Size I OCR-B Swiss 721 Swiss 721 Bold Monospace 821 TrueType fonts storable to printer
Bar Code Capability	Yes
Bar Code Type	Linear barcodes: Code 39; Code 39 Full ASCII; Code 93; Code 128 A; B; C; Codabar; Deutsche Post (indent- and routing); EAN 8; 13; EAN/UCC 128/GS1-128; EAN/UPC Appdx 2 and Appdx 5; FIM; HIBC; Interleaved 2/5; JAN 8; 13; MSI; Plessey; Postnet; RSS 14; UPC A; E; EO 2D barcodes: Aztec; DataMatrix; QR Code; PDF 417; UPS MaxiCode; GS1 Databar; Codablock F; Micro PDF 17; RSS 14 (truncated; limited; stacked; stacked omni-dir); EAN/GS1 DataMatrix. Sizing: variable in height, modular width and ratio Rotation: 0°, 90°, 180°, 270°

SOFTWARE & CONNECTIVITY	
Connectivity Options	USB, Serial, Ethernet. Optional : WiFi, Bluetooth
Software Compatibility	Brady Workstation, LabelMark, Windows based driver for 3rd party software use
Programming Language	abc Basic Compiler, Database Connector, Jscript, ZPL Emulator, SAP Integration

COMPLIANCE	
Approval/Compliance	CE, FCC class A, cUL. Contact Brady for up-to-date list of environmental compliance information and agency approvals and/or marks covering over 75 countries (awarded or applied for)



Versions

BradyPrinter i5100, centre aligned, standard version **300 dpi** and **600 dpi** are ideal for printing on labels, tags and select continuous media wound on rolls or fanfolded. Media is torn off after printing using tear bar that is standard on printer. 600 dpi is ideal for smaller fonts, intricate graphics and bar coding, including 2D Codes.

BradyPrinter i5100, centre aligned, auto cutter version, **300 dpi** and **600 dpi** - In addition to the capabilities of the standard version, this configuration has a built-in auto cutter and tear bar to allow for tear-off or complete cut-through printing. Cutting is limited to cuttable materials at down-web label lengths of 12 mm or greater.

Article No.	Order Ref.	Description
149458	i5100-300-UKEU	BradyPrinter i5100 300 dpi - UK/EU
306872	i5100-300-EU-LABS	BradyPrinter i5100 300 dpi - UK/EU with Brady Workstation LAB Suite
198778	i5100-300-EU-PWID	BradyPrinter i5100 300 dpi - UK/EU with Brady Workstation PWID Suite
149459	i5100-300-C-UKEU	BradyPrinter i5100 300 dpi - UK/EU with Cutter
306874	i5100-300C-EU-LABS	BradyPrinter i5100 300 dpi - UK/EU with Cutter and Brady Workstation LAB Suite
198779	i5100-300C-EU-PWID	BradyPrinter i5100 300 dpi - UK/EU with Cutter and Brady Workstation PWID Suite
198766	i5100-300-US	BradyPrinter i5100 300 dpi - US
306873	i5100-300-US-LABS	BradyPrinter i5100 300 dpi - US with Brady Workstation LAB Suite
198772	i5100-300-US-PWID	BradyPrinter i5100 300 dpi - US with Brady Workstation PWID Suite
198767	i5100-300-C-US	BradyPrinter i5100 300 dpi - US with Cutter
306875	i5100-300C-US-LABS	BradyPrinter i5100 300 dpi - US with Cutter and Brady Workstation LAB Suite
198773	i5100-300C-US-PWID	BradyPrinter i5100 300 dpi - US with Cutter and Brady Workstation PWID Suite

Article No.	Order Ref.	Description
149461	i5100-600-UKEU	BradyPrinter i5100 600 dpi - UK/EU
306876	i5100-600-EU-LABS	BradyPrinter i5100 600 dpi - UK/EU with Brady Workstation LAB Suite
198780	i5100-600-EU-PWID	BradyPrinter i5100 600 dpi - UK/EU with Brady Workstation PWID Suite
149462	i5100-600-C-UKEU	BradyPrinter i5100 600 dpi - UK/EU with Cutter
306878	i5100-600C-EU-LABS	BradyPrinter i5100 600 dpi - UK/EU with Cutter and Brady Workstation LAB Suite
198781	i5100-600C-EU-PWID	BradyPrinter i5100 600 dpi - UK/EU with Cutter and Brady Workstation PWID Suite
198768	i5100-600-US	BradyPrinter i5100 600 dpi - US
306877	i5100-600-US-LABS	BradyPrinter i5100 600 dpi - US with Brady Workstation LAB Suite
198774	i5100-600-US-PWID	BradyPrinter i5100 600 dpi - US with Brady Workstation PWID Suite
198769	i5100-600-C-US	BradyPrinter i5100 600 dpi - US with Cutter
306879	i5100-600C-US-LABS	BradyPrinter i5100 600 dpi - US with Cutter and Brady Workstation LAB Suite
198775	i5100-600C-US-PWID	BradyPrinter i5100 600 dpi - US with Cutter and Brady Workstation PWID Suite

Accessories

Label rewinder / dispenser

Article No.	Order Ref.	Description
302741	MC11 EUR	MC-11 Powered Label Rewinder for Europe
302742	MC11 PS EUR	MC-11 15V-DC Power Supply for Europe
302743	MC11 PS UK	MC-11 15V-DC Power Supply for United Kingdom
302744	LD100RS EUR	LD-100-RS Automatic Label Dispenser for Europe
302745	LD100RS CNTR	LD-100-RS Counter option
302746	LD100RS PS15V EUR	LD-100-RS Power Supply for Europe
302747	LD100RS PS15V UK	LD-100-RS Power Supply for United Kingdom
302748	LD100RS BP	LD-100-RS Battery Pack



The Basic Suite is included with every printer, all you need to do is download it.

Workstation.BradyID.com/Free



Quickly identify your products and wires with customised text or graphical labels, using serialised or imported data.

Workstation.BradyID.com/ProductandWire



Ensure labels for all your lab samples and equipment are crisp, clear, readable and contain all necessary information. Easily design and create labels for your cryovials, centrifuge tubes, bottles, conicals, slides and other samples in your laboratory.

Workstation.BradyID.com/LAB



Consult the videos of the i5100 BradyPrinter on: www.bradyeurope.com/i5100

The right accessory for every application

Ribbon spindle and roll holder

The specially designed ribbon spindles and roll holders easily lock into place quickly and always in the correct orientation. This feature makes this printer ideal for facilities that use a variety of materials throughout the day.

RFID enabled media roll holder

Holds 76mm open core media rolls and auto-detects Brady RFID enabled media rolls. Separates and slides back together easily for fast self-centering installation of media roll. Also fits older Brady IP-model printers.

Ribbon takeup spindle

Features flexible green tab for faster ribbon threading and a quick-release lever for removing used ribbon from spindle. Also fits older Brady IP-model printers.



Order Reference	Art. No.	Description
i5100-IP-HOLDER	149470	RFID enabled Media Roll Holder
i5100-IP-RIBBTKUP	149562	Ribbon Takeup Spindle



149471



149598



149473



149472

Field changeable platen rollers

To keep your printer running smoothly and to avoid unnecessary costs, the BradyPrinter i5100 has rollers available in a variety of widths that can be quickly changed out and replaced to improve print head life. These rollers are designed to be used with materials that have similar widths to help reduce wear on the print head.

Order Reference	Art. No.	Description
i5100-PR-120mm	149471	i5100 120mm Platen Roller
i5100-PR-25mm	149472	i5100 25mm Platen Roller
i5100-PR-50mm	149473	i5100 50mm Platen Roller
i5100-PR-80mm	149598	i5100 80mm Platen Roller

Interfacing & connectivity

The i5100 has a diverse set of connection ports on the back of the printer allowing you to connect common devices to the printer.

Bluetooth USB adapter

For installation in the USB port in the back of the printer.

RS232C cable

3 meter length connecting cable RS232C 9/9 pin.

USB WLAN Stick

For installation in the USB port in the back of the printer. 2.4 GHz 802.11b/g/n + 5 GHz a/n/ac with rod antenna for extended reach.

Order Reference	Art. No.	Description
BT-USB-ADAPT	149080	Bluetooth USB Adapter
WLAN-EXANT	149131	USB Wlan Stick with External Antenna
SD-CARD-8GB	197823	SD Memory card 8GB
RS232 C 9/9-pin 3m	711019	Cable RS232 C, 9/9-pin, 3m

Cleaning & maintenance Tools

Clean print heads and rollers often to minimise wear on the print head, and maximise both print sharpness and print head life. IPA printer cleaning swabs remove dust and adhesive build-up from sensors and other surfaces in the printer.

IPA Printer cleaning swabs

Lint-free synthetic cleaning swabs for cleaning printer rollers, guides and print heads. Pkg of 50 individually wrapped swabs

Order Reference	Art. No.	Description
PCK-6	133251	Printer Cleaning Kit - Thermal Transfer Printers



Africa

Randburg, South Africa
 Tel.: +27 11 704 3295
 Email: africa@bradycorp.com

Benelux

Zele, Belgium
 Tel.: +32 (0) 52 45 78 11
 Email: benelux@bradycorp.com

Central & Eastern Europe

Bratislava, Slovakia
 Tel.: +421 2 3300 4800
 Email: central_europe@bradycorp.com

Denmark

Odense
 Tel.: +45 66 14 44 00
 Email: denmark@bradycorp.com

France

Roncq
 Tel.: +33 (0) 3 20 76 94 48
 Email: france@bradycorp.com

Germany, Austria & Switzerland

Egelsbach, Germany
 Tel.: +49 (0) 6103 7598 660
 Email: germany@bradycorp.com

Hungary

Budaörs
 Tel.: +36 23 500 275
 Email: central_europe@bradycorp.com

Italy

Gorgonzola
 Tel.: +39 02 26 00 00 22
 Email: italy@bradycorp.com

Middle East FZE

Dubai, UAE
 Tel.: +971 4881 2524
 Email: me@bradycorp.com

Norway

Kjeller
 Tel.: +47 70 13 40 00
 Email: norway@bradycorp.com

Romania

Bucharest
 Tel.: +40 21 202 3032
 Email: central_europe@bradycorp.com

Russia

Moscow
 Tel.: +7 495 269 47 87
 Email: central_europe@bradycorp.com

Spain & Portugal

Madrid, Spain
 Tel.: +34 900 902 993
 Email: spain@bradycorp.com,
 portugal@bradycorp.com

Sweden, Finland, Baltic states

Kista, Sweden
 Tel.: +46 (0) 8 590 057 30
 Email: sweden@bradyeurope.com

Turkey

Istanbul
 Tel.: +90 212 264 02 20 / 264 02 21
 Email: turkey@bradycorp.com

UK & Ireland

Banbury, UK
 Tel.: +44 (0) 1295 228 288
 Email: uk@bradycorp.com

Our mission is to identify and protect people, products and premises



To help minimise our impact on the environment, Brady limits its number of reprints.

Updated versions are always available for download on www.bradyeurope.com.



Search for: EUR-M-978-EN



Y4652355

Your distributor

05/08/2020